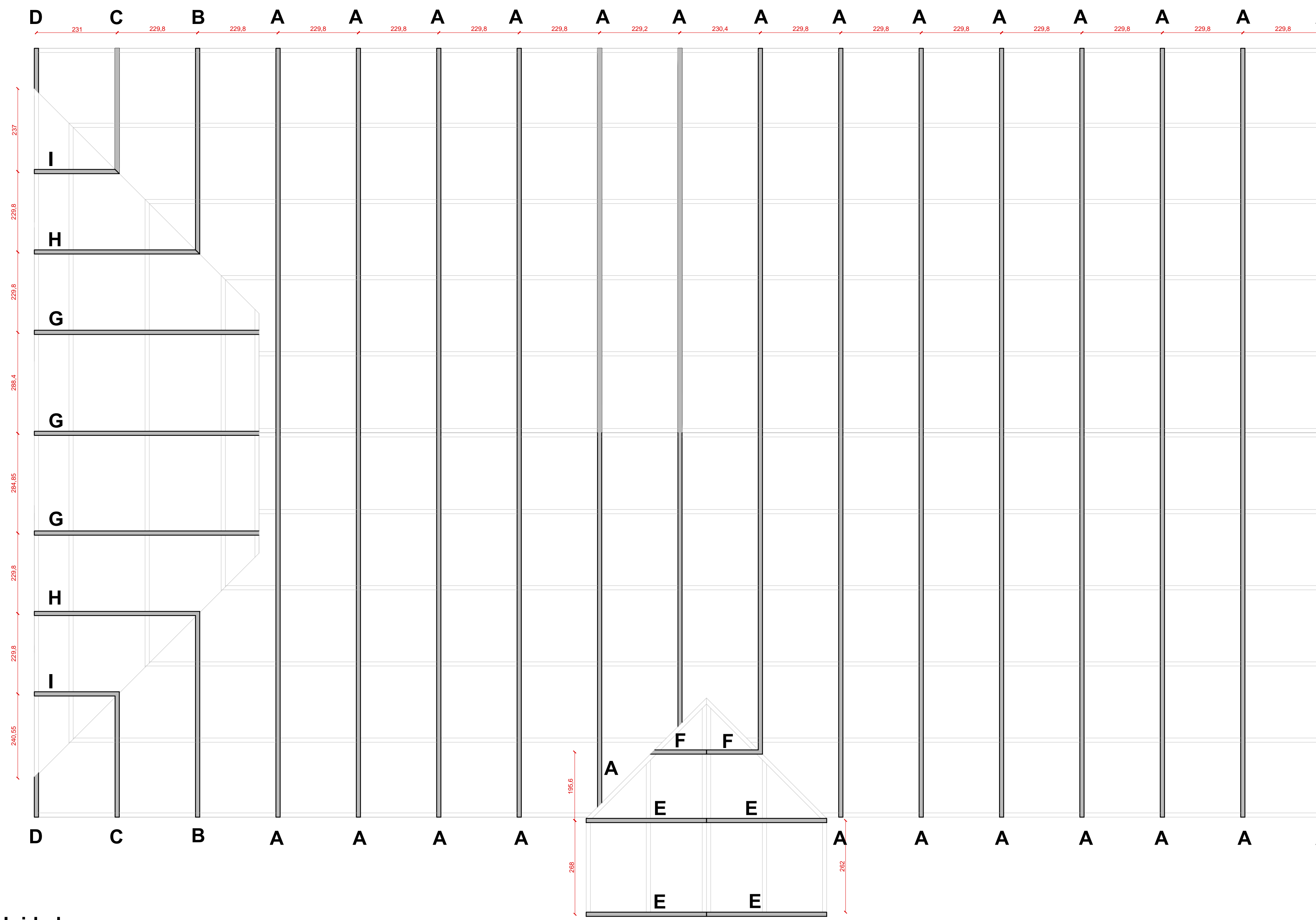
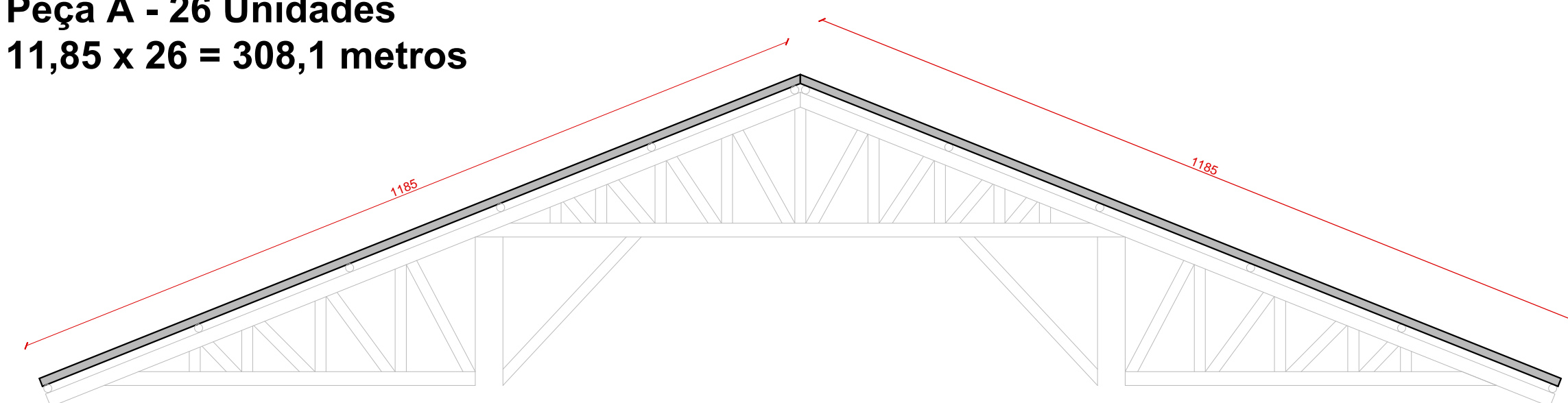


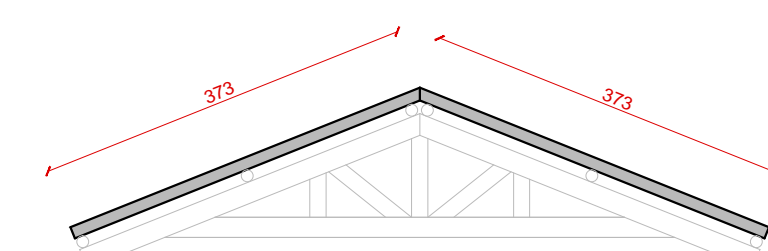
Caibros para superte do ripamento do telhado
 Madeira roliça - Ø 12 cm
 TOTAL = 388,90 METROS



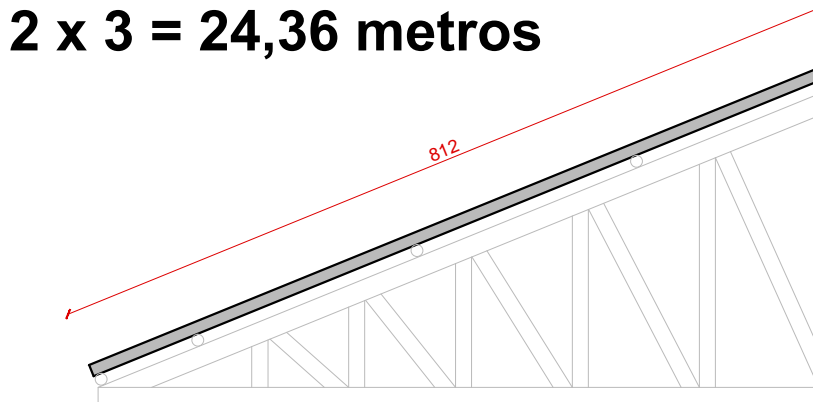
Peça A - 26 Unidades
 11,85 x 26 = 308,1 metros



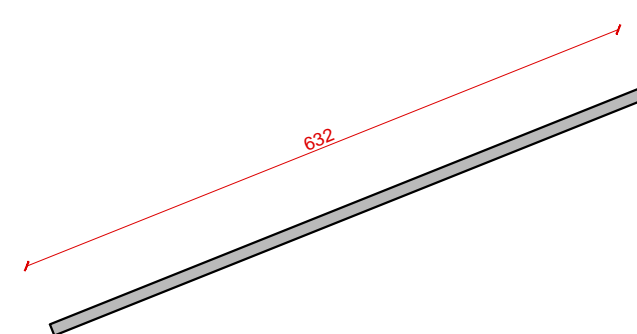
Peça E - 4 Unidades
 3,73 x 4 = 14,92 metros



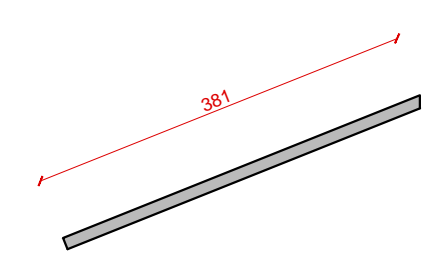
Peça G - 3 Unidades
 8,12 x 3 = 24,36 metros



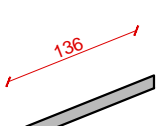
Peça B - 2 Unidades
 6,32 x 2 = 12,64 metros



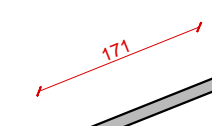
Peça C - 2 Unidades
 3,81 x 2 = 7,62 metros



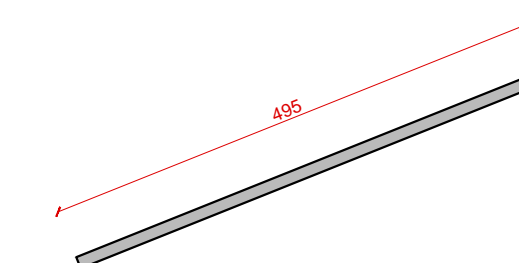
Peça D - 2 Unidades
 1,36 x 2 = 2,72 metros



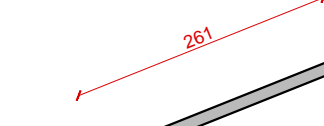
Peça F - 2 Unidades
 1,71 x 2 = 3,42 metros



Peça H - 2 Unidades
 4,95 x 2 = 9,90 metros



Peça I - 2 Unidades
 2,61 x 2 = 5,22 metros



2ª ETAPA
CONTRATO DE REPASSE nº 835586/2016

ELVIS BREGOLIN Engenheiro Civil e de Registro de Imóveis - CREA 15.100 Município de Guaporé - RS e-mail: elvis@bregolin.com.br		Telefone (54) 3443-3126 (54) 9973-8786
Local Centro de Eventos e Informações Turísticas Março de 2017		Área 749,65 m²
Município de Guaporé		Escala 1/75
Elvis Bregolin		Assinatura José C. Benvenuto
Detalhamento telhado 03		07 / 08